



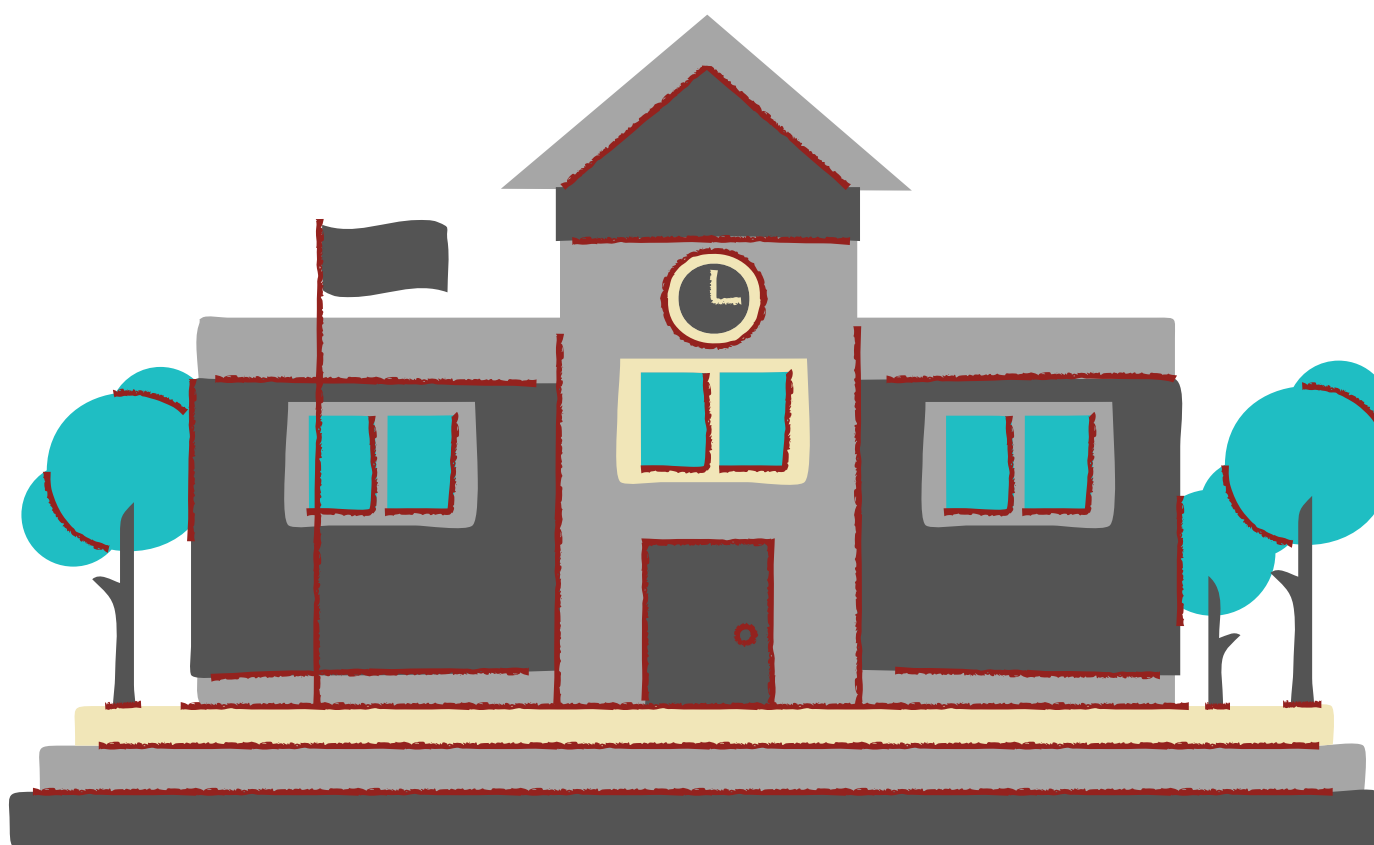
2021-2022

# BACK TO SCHOOL

## OPENING PLANS PK-8TH GRADE

In response to the Covid19 Guidelines  
& Pandemic Protocol

**\*Subject to change based on  
Health Department Guidance**



**Illinois**  
State Board of Education





# PROTOCOLS



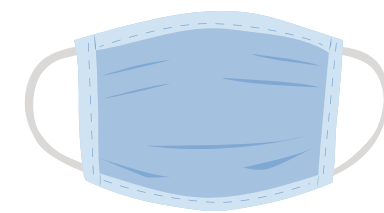
Here are some updates and protocols for the 2021-22 school year in response to the pandemic.



100% In-Person Learning



\*Remote learning is for positive cases and close contacts only. Proof of positive test result is required for remote class.



\*Masks are **required** for all students and staff in the building as well as visitors.



Morning arrival continues with student drop-off and only students allowed in the building. Staff assist students to class.



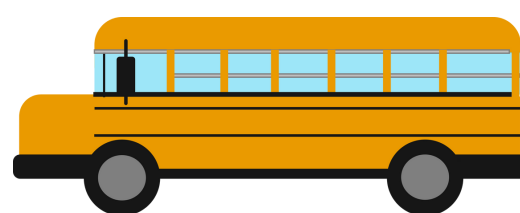
Dismissal continues with using the free PIKMYKID app. Visitors will wait outside during dismissal.



Visitors allowed in the building by appointment only on school days and will check into the front desk and be issued a visitor's badge.



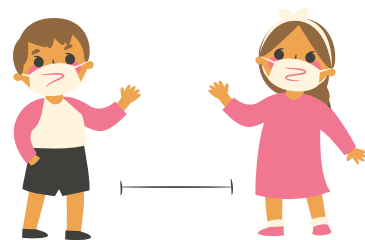
Traveling will not require a quarantine upon arrival.



Field Trips Resume following CDC guidelines.



Normal recess procedures are followed; playground will be in use and sanitized routinely.



\*3 ft social distancing in classrooms will be followed per CDC guidelines. Capacity is 20 students per room (normal capacity)



Clubs & Tutoring Begin September 7th, 2021 from 3:20pm-4:00pm



COVID19 vaccines for staff are encouraged. Vaccines for students are encouraged. Vaccinated staff are not required to quarantine for a close contact situation.



\*4th-8th graders will NOT change into PE shirts for PE. Locker rooms will NOT be utilized.



HEPA air purifiers used daily in each room.



1:1 devices are assigned to students. 6th-8th graders are allowed to take them home.



Updated August 6th, 2021

2021-22 Science Academy of Chicago School Year  
Returning to pre-pandemic, near-normal operations

Operating Protocol for the 2021/22 School Year

During the 2020/21 school year, the Science Academy of Chicago put the needs of their students first by providing a top-quality, in-person and virtual education during a world-wide pandemic. Thanks to the incredible dedication and ingenuity of our school teachers and staff, the Science Academy of Chicago was extremely successful conducting in-person education each day. This was only possible because we followed a set of principles. As a result, our students flourished. With your help, we look forward to meeting– and hopefully exceeding – that achievement again this year.

**Guiding Principles for the 2021-22 SY:**

- 1) The safety and wellbeing of our students and staff remain our top priority.
- 2) The progress of the COVID-19 pandemic in Illinois remains unpredictable. We continue to consult with public health authorities and modify requirements during the school year as conditions, mandates and guidance change.
- 3) We will regularly review the protocols and communicate updates to families and school staff in a timely manner.

**Protocol Details:**

*Masking*

- ❖ Given the new evidence on the COVID-19 Delta variant and the rising infection and hospitalization rates, **the State of Illinois has mandated the wearing of masks indoors for all school personnel and Pre-K through grade 12 students regardless of vaccination status**
- ❖ **Please note the following guidance on masking requirements for schools:**
  - Students and staff who are masked and three feet from a confirmed case indoors are not considered close contacts in the new CDC guidance. Therefore, consistent and correct mask use will drastically reduce the number of students and staff needing to quarantine. **Under these new guidelines, only the positive case should need to quarantine.**
- ❖ No masks are required outdoors

## Returning to near pre-pandemic full operation

### *Building operations resume*

- ❖ Capacity restrictions are removed; class size maximum is 20 students
- ❖ Classrooms will be arranged per teacher's seating charts and design (tables, desks, flex seating)
- ❖ There will no longer be cohorts/pods stationed in one class all day; however, every classroom will maintain an assigned seating chart since any necessary quarantines will be limited to only the students in closest proximity to any COVID-19-positive student (i.e., fellow students seated in front, back, left or right).
- ❖ Students will travel to specials' teachers' classrooms as normal
  
- ❖ Restrooms remove capacity
- ❖ Playground use
- ❖ Sports equipment use
- ❖ Lunch line service resumes
- ❖ Lockers will be assigned
- ❖ Library will be open to use

### *Vaccinations*

All eligible students, teachers and staff are strongly encouraged to be vaccinated against COVID-19.

- ❖ Fully vaccinated individuals who have 1.) been in close contact with someone who has COVID-19 and 2.) are asymptomatic are not required to quarantine. Proof of vaccination will be required to avoid quarantines.
- ❖ Fully vaccinated people are required to isolate if they test positive.

### *Physical Distance*

- ❖ It is important to maintain three feet of physical distancing wherever possible (classrooms, assemblies, lunch, etc.)
- ❖ Classrooms: teachers are required to maintain a seating chart
- ❖ Classrooms: distancing and furniture placement should not inhibit best academic practices.
- ❖ Lunch: students no longer need to face in the same direction but will maintain a 3 ft distance while at lunch

### *Hygiene*

Good respiratory and hand hygiene must be practiced by all individuals. To help them comply with good practices:

- ❖ Hand sanitizer should be readily available in all classrooms, offices and common areas and regular use should be strongly encouraged
- ❖ Staff and students should use hand sanitizer every time they enter a room

- ❖ All students and staff should be regularly encouraged to practice good respiratory and hand hygiene (covering coughs and sneezes, frequent hand washing and use of hand sanitizer)
- ❖ Water bottles should be used instead of drinking directly from water fountains

## Isolation and Quarantine Procedures

### QUARANTINE PROCEDURES

- ❖ **The Illinois State Board of Education made a determination that a remote option must be offered for anyone who needs to quarantine.** This includes both students who test positive for COVID-19 or unvaccinated students who are determined to be a close contact to students who tested positive for COVID-19.
- ❖ Details will be provided, but in general, if a student needs to quarantine they will join remotely during their quarantine dates where they will continue to receive instruction
- ❖ If a student tests positive, they will be required to isolate for 10 days from the onset of symptoms or the date of positive test result. **Students who test positive and are not able to attend classes online due to sickness will be absent excused and follow the regular absent work policy. This absence while quarantining and being a temporary remote learner must be called in to the school office the morning of the absence.**
- ❖ If a student tests positive and are: asymptomatic and/or able to join class remotely, he/she will be required to join or marked absent
- ❖ **\*Once students receive a positive test result, then they can join online after timely communication with the school admin.** School admin will communicate with teachers.
- ❖ Siblings of a probable case will also be sent home and may return once probable case is released back to school.
- ❖ If a student tests positive, their sibling is considered a close contact and will follow the same quarantine procedure for remote instruction.

### CLOSE CONTACT DISTANCING

- ❖ Vaccinated people will not be considered close contacts.
- ❖ Contact tracing will still be required for unvaccinated people.
- ❖ When contact tracing, close contacts are now defined as being within 3-feet of a positive or probable case when inside. If both students are masked, they are not considered close contacts. This previously was defined as being within 6-feet of a positive or probable case even with masks. Close contacts are no longer those in outdoor activities.

## Travel

- ❖ Any student that travels during school days will follow the regular SAC student/family handbook policy and will be absent and unexcused per SAC's absence policy (see page 19 of the handbook)
- ❖ Students traveling will not be allowed to join class via zoom
- ❖ Students traveling will not be required to quarantine or produce a negative result to return to school

**Covid related symptoms:** People with COVID-19 have had a wide range of symptoms reported – ranging from mild symptoms to severe illness.

**\*One or more symptoms require a doctor's note and/or a negative covid-test result to return back to school**

-fever of 100.4 or higher  
-new cough  
-severe headache  
-shortness of breath  
-sore throat

-vomiting or diarrhea  
-congested/runny nose  
-loss of taste or smell  
-nausea/stomach pain

-fatigue for unknown reason  
-muscle or body aches for unknown reason

## Notifying of sickness

Please make sure to notify Ms. Tavus if your child will be absent. This will allow us to be aware and notify teachers. Ms. Tavus is required to keep track of both attendance and symptoms of all students in the building.

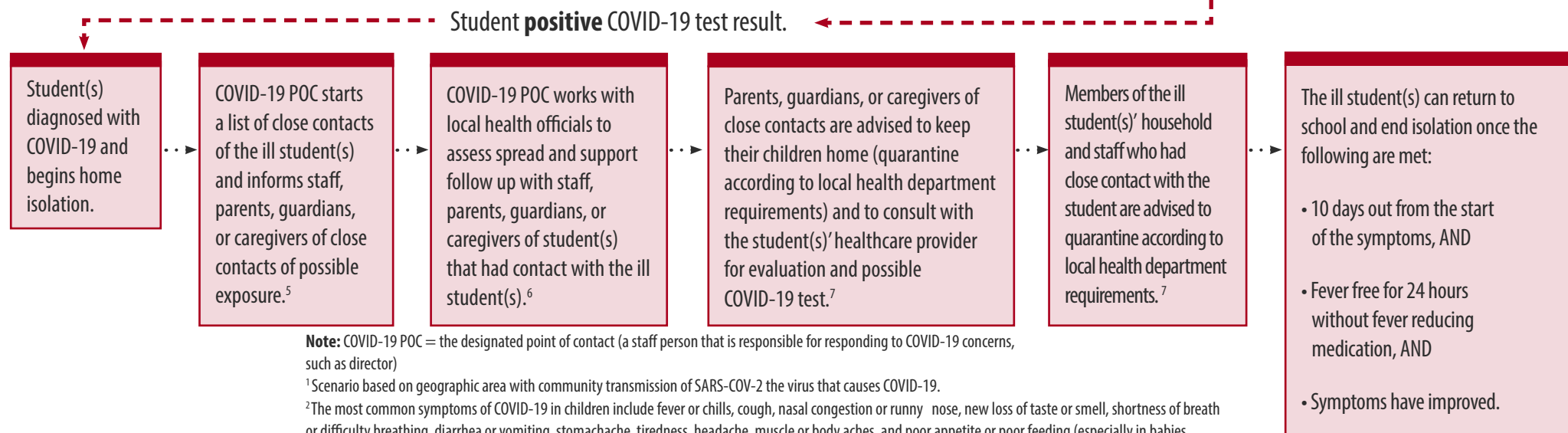
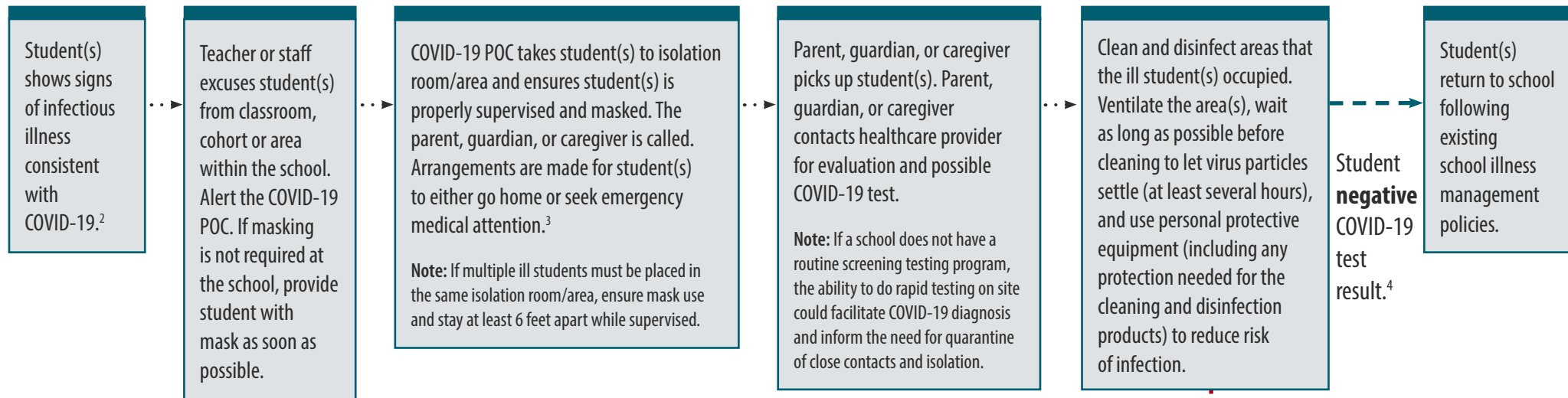
Thank you for your cooperation. Please let us know if you have any questions.

Brianna Bartucci  
Principal  
[bartucci@saoc.org](mailto:bartucci@saoc.org)

Mustafa Tahrn  
Assistant Principal  
[tahrn@saoc.org](mailto:tahrn@saoc.org)

Tavus Saparova  
Admin Assistant  
[tavus@saoc.org](mailto:tavus@saoc.org)

# WHAT TO DO IF A STUDENT BECOMES SICK OR REPORTS A NEW COVID-19 DIAGNOSIS AT SCHOOL<sup>1</sup>



**Note:** COVID-19 POC = the designated point of contact (a staff person that is responsible for responding to COVID-19 concerns, such as director)

<sup>1</sup> Scenario based on geographic area with community transmission of SARS-COV-2 the virus that causes COVID-19.

<sup>2</sup> The most common symptoms of COVID-19 in children include fever or chills, cough, nasal congestion or runny nose, new loss of taste or smell, shortness of breath or difficulty breathing, diarrhea or vomiting, stomachache, tiredness, headache, muscle or body aches, and poor appetite or poor feeding (especially in babies under 1 year old).

<sup>3</sup> Schools that do not have a universal mask requirement could require masking by students, teachers, and staff if they are experiencing onset of upper respiratory infection symptoms at school while waiting to be picked up or leave the school.

<sup>4</sup> With no known close contact.

<sup>5</sup> Close contact is defined as someone who was within 6 feet for a total of 15 minutes or more within 2 days prior to illness onset, regardless of whether the contact was wearing a mask. See exception in the definition for the exclusion of students in the K-12 indoor classroom: <https://www.cdc.gov/coronavirus/2019-ncov/php/contact-tracing/contact-tracing-plan/appendix.html#contact>

<sup>6</sup> To the extent allowable by applicable laws regarding privacy.

<sup>7</sup> CDC guidance provides that people who are fully vaccinated and do not have COVID-19 symptoms do not need to quarantine, but should get tested after an exposure to someone with COVID-19.

